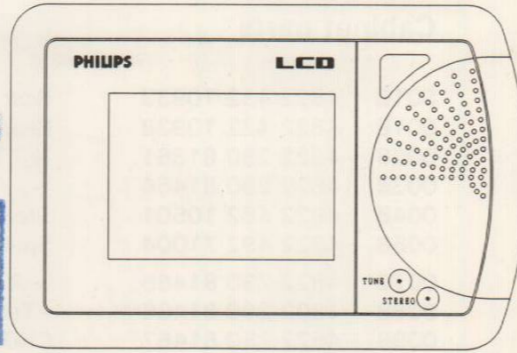


Service
Service
Service

HERDRUK

ARCHIEF

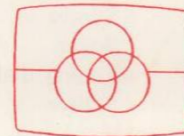
Red. Cod. Techn. Art. Chef



Service Manual

CHASSIS LCD3-ECO

- GB** Safety regulations require that the set be restored to its original condition and that parts which are identical with those specified be used.
- NL** Veiligheidsbepalingen vereisen, dat het apparaat in zij oorspronkelijke toestand wordt teruggebracht en dat onderdelen, identiek aan de gespecificeerde worden toegepast.
- D** Bei jeder Reparatur sind die geltenden Sicherheitsvorschriften zu beachten. Der Originalzustand des Geräts darf nicht verändert werden. Für Reperaturen sind Original-Ersatzteile zu verwenden.
- F** Les normes de sécurité exigent que l'appareil soit remis à l'état d'origine et que soient utilisées les pièces de rechange identiques à celles spécifiées.
- I** Le norme di sicurezza esigono che l'apparecchio venga rimesso nelle condizioni originali e che siano utilizzati pezzi di ricambio a quelli specificati.



Free service manuals
Gratis schema's

Digitized by

www.freesevicemanuals.info

220V_{AC} 8W
240V_{AC} 8W (-/05R)

9V_{DC} 3,5W

a x b x c
136x49x90mm

150mW



PAL BG (-/02R/10R)
PAL I (-/05R)

A/V

Input level:
Video 1Vpp
Audio 500mVrms



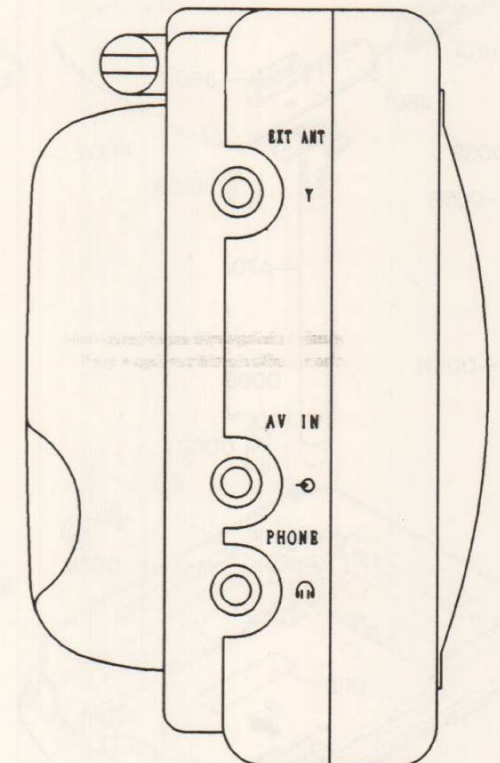
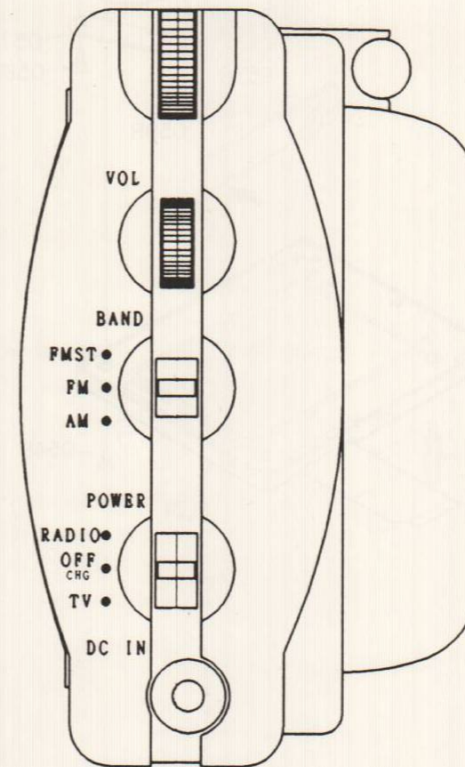
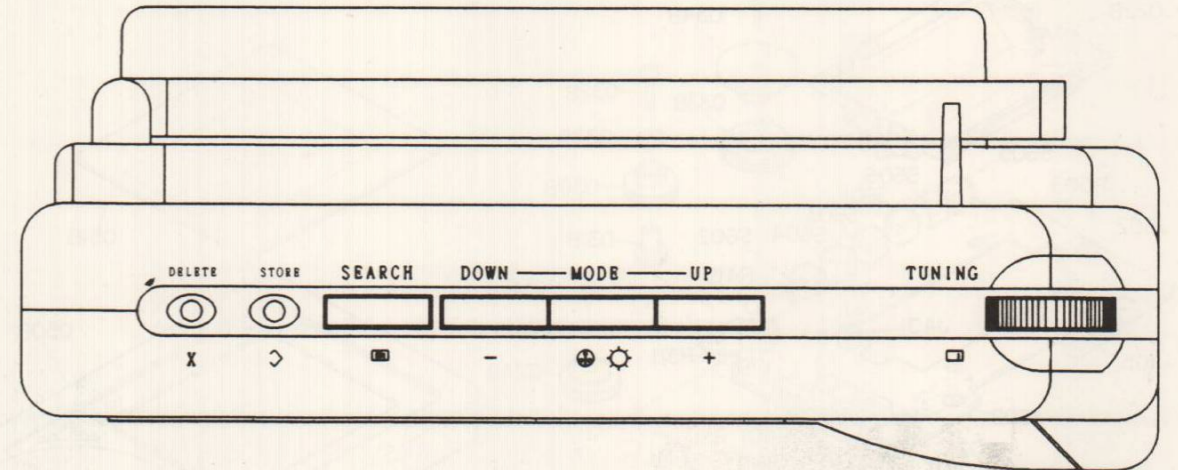
430g (with battery)

TEPZ5-001A

TV Channels
VHF: 2-12
UHF: 21-69

Radio Bands
AM 531-1602KHz
FM 88-108MHz

Controls - In/outs



PHILIPS

Service
Service
Service

ARCHIVE			
Red.	Cod.	Techn.	Art. Chef

03LC3150

02R/05R/10R

92.01

Service Information

(GB)

Modification of the PCB layout of 03LC3150

The layout of model 03LC3150 is being changed to a double-sided reflow layout. This layout was introduced into production in February 1992. The serial number changes from MZ00..... to MZ01.....

The following documents contain the modified layout and a new parts list.

(NL)

Het wijzigen van de PCB lay-out van 03LC3150.

Van apparaat 03LC3150 wijzigt de lay-out in een dubbelzijdig reflow lay-out. Deze lay-out is vanaf februari 1992 in de productie geïntroduceerd. Het serie nummer verandert van MZ00..... naar MZ01.....

In de volgende documenten staat de gewijzigde lay-out en een nieuwe stuklijst.

(D)

Änderung des Platinen-Layouts beim 03LC3150

Beim Gerät 03LC3150 wird das Layout in ein doppelseitiges Reflow-Layout umgewandelt. Dieses Layout wurde ab Februar 1992 bei der Produktion eingeführt. Die Seriennummer lautet statt MZ00..... ab sofort MZ01.....

In den folgenden Dokumenten sind das geänderte Layout und eine neue Stückliste enthalten.

(E)

Cambio en la disposición del PCB (Circuito Impreso) del 03LC3150.

En el aparato 03LC3150 se ha cambiado la disposición haciéndola de doble cara. Esta disposición se ha introducido en la fabricación desde febrero de 1992. El número de serie cambia de MZ00..... a MZ01.....

En los documentos siguientes se indica la nueva disposición y una nueva lista de piezas.

(F)

Modification de configuration de la carte de circuit imprimé de 03LC3150

La configuration de l'appareil 03LC3150 devient à refusion double face. Cette configuration a été introduite dans la production depuis février 1992. Le numéro de série change et MZ00..... devient MZ01.....

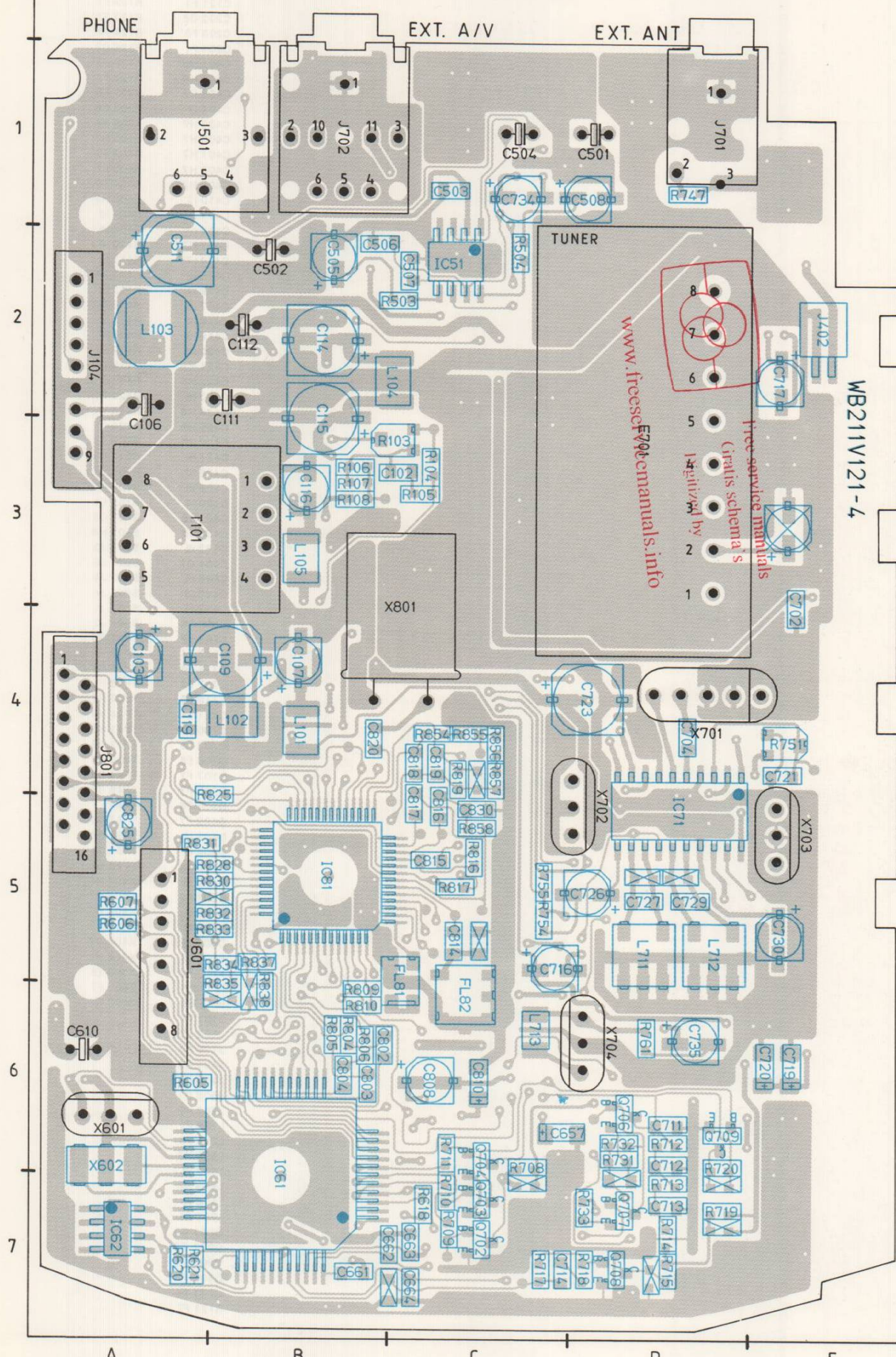
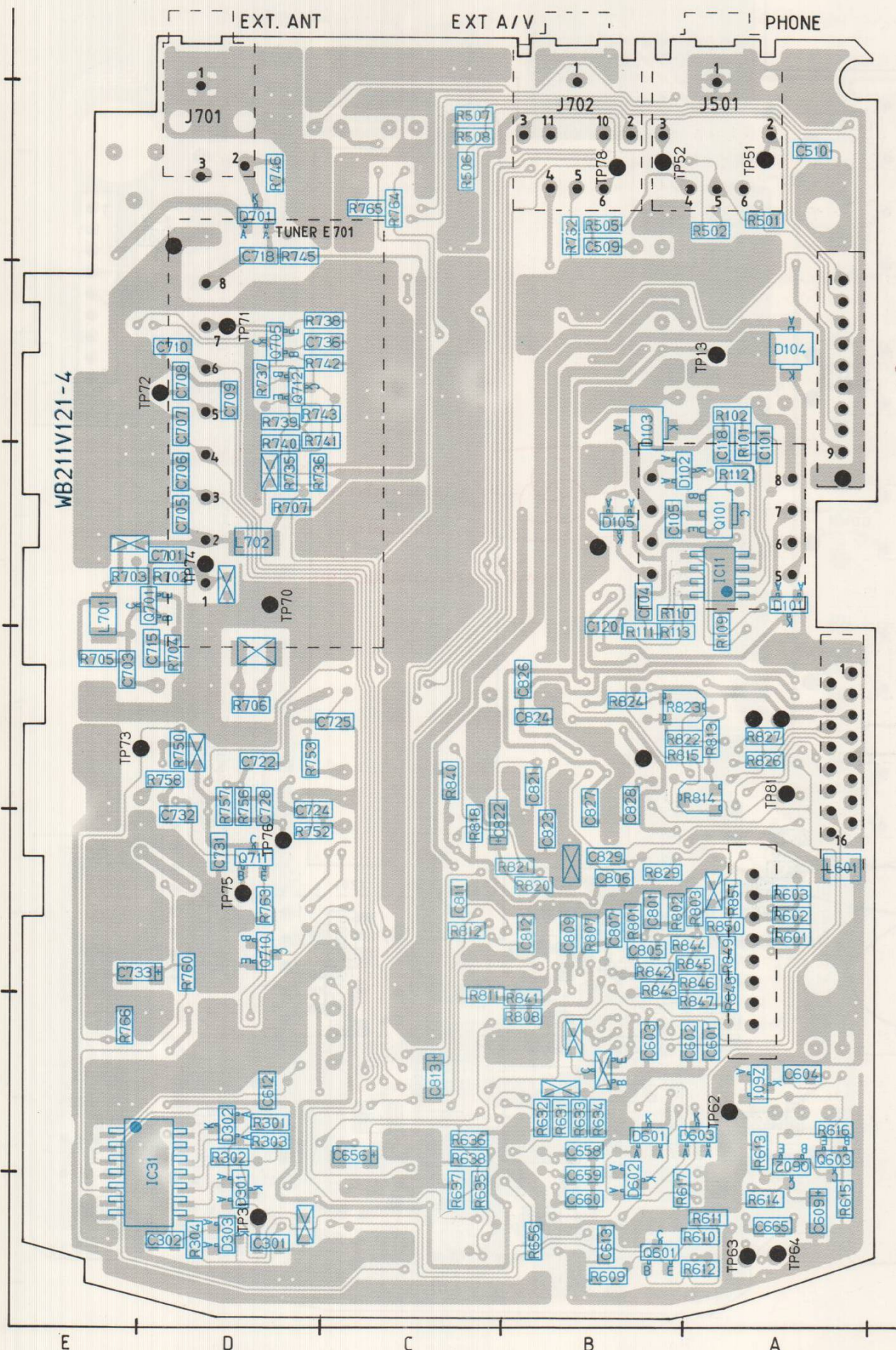
La configuration modifiée ainsi qu'une nouvelle nomenclature des pièces figurent dans les documents suivants.

(I)

Modifica del lay-out del PCB del 03LC3150.

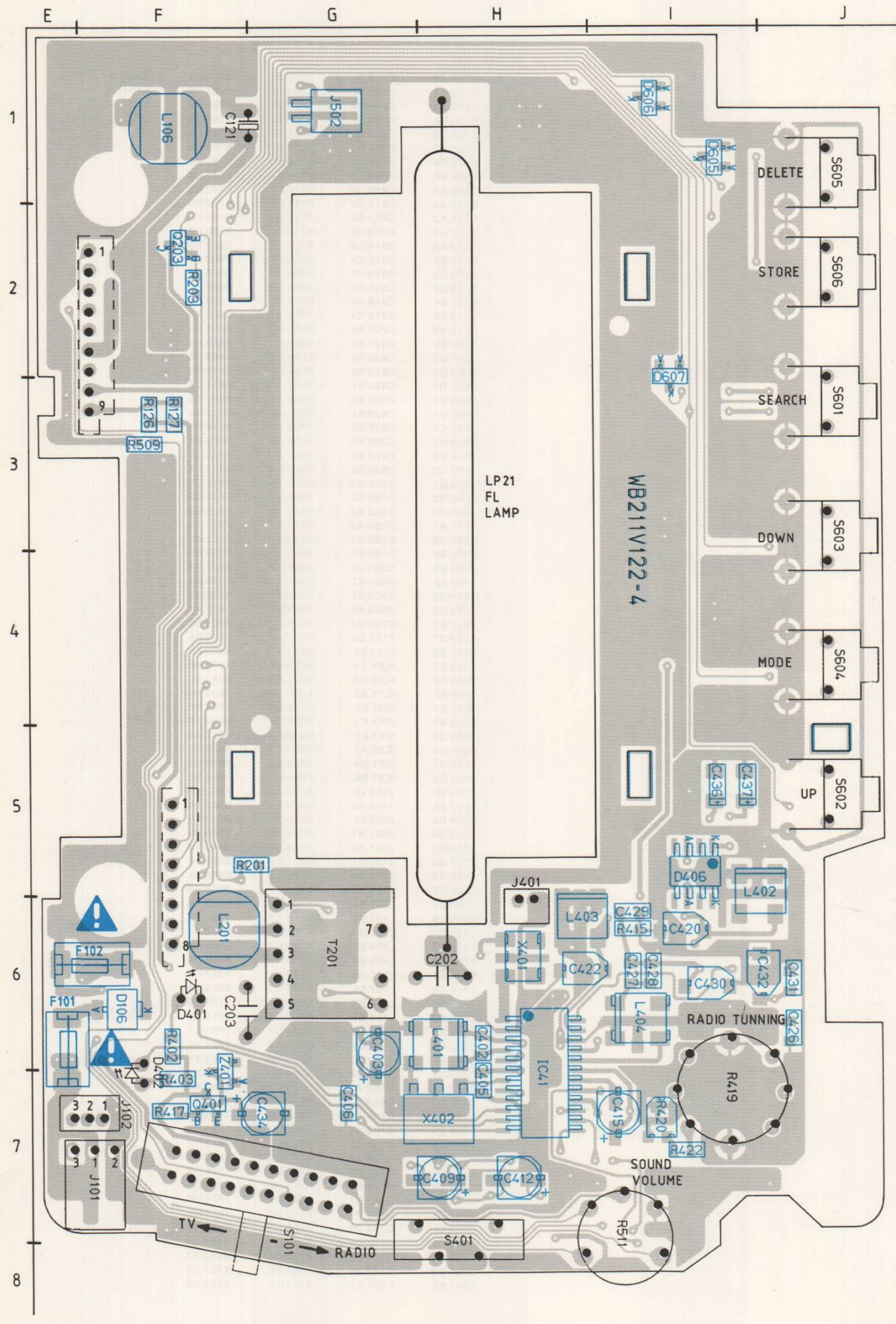
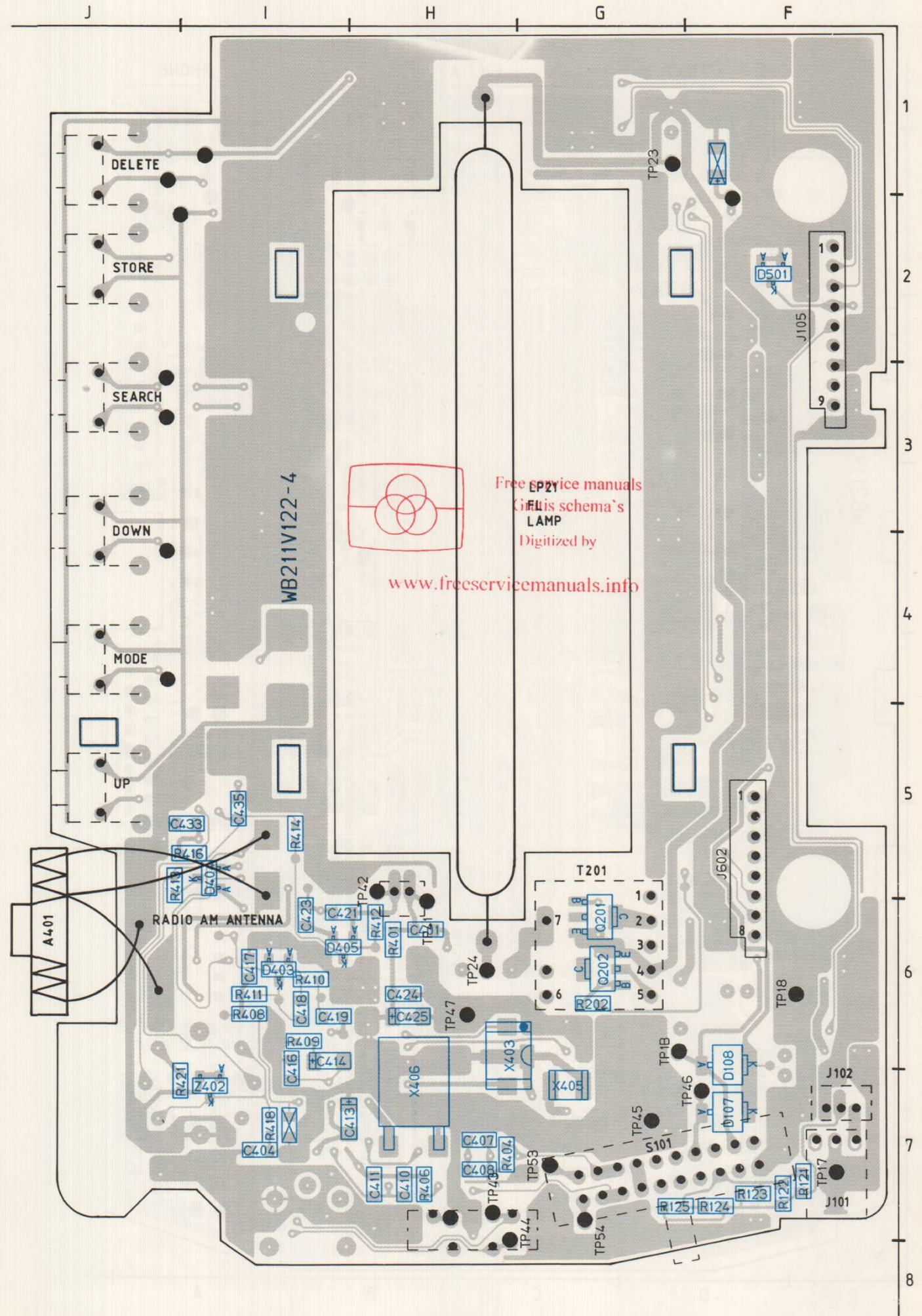
Il lay-out dell'apparecchio 03LC3150 è stato modificato in un lay-out di reflow bilaterale. Questo lay-out è stato introdotto nella produzione a partire da febbraio 1992. Il numero della serie cambia da MZ00..... in MZ01..... Nei successivi documenti è inserito il lay-out modificato ed un nuovo elenco dei particolari.

C101 A3	C802 B6	R102 B3	R753 D4	X703 E5
C102 B3	C803 B6	R103 B3	R754 C6	X704 D6
C103 A4	C804 B6	R104 B3	R755 C5	X801 C4
C104 B4	C805 B5	R105 B3	R756 D5	Z601 A7
C105 B3	C806 B5	R106 B3	R757 D5	
C106 A2	C807 B5	R107 B3	R758 D6	
C107 B4	C808 B6	R108 B3	R760 D6	
C108 B4	C809 B6	R109 A4	R781 D6	
C109 A4	C810 C6	R110 B4	R782 B2	
C110 A4	C811 C6	R111 B4	R783 D5	
C111 A2	C812 B5	R112 A3	R784 C2	
C112 A2	C813 C6	R113 B4	R785 C2	
C113 A2	C814 C5	R301 D7	R801 B5	
C114 B2	C815 C6	R302 D7	R802 B5	
C115 B2	C816 C6	R303 D7	R803 B5	
C116 B3	C817 C6	R304 D6	R804 B6	
C117 B4	C818 C4	R601 A1	R805 B6	
C118 B3	C819 C4	R602 A2	R806 B6	
C119 A4	C820 B4	R603 B2	R807 B5	
C120 B3	C821 B5	R604 C2	R808 B6	
C301 D7	C822 C6	R605 B2	R809 B6	
C302 D6	C823 B5	R606 C1	R810 B6	
C601 D1	C824 B4	R607 C1	R811 C6	
C502 B2	C825 A5	R608 C1	R812 C5	
C603 C1	C826 B4	R801 A5	R813 B4	
C604 C1	C827 B5	R802 A5	R814 B5	
C505 A2	C828 B5	R603 A5	R815 B4	
C506 B2	C829 B5	R605 A6	R816 C5	
C507 C2	C830 C5	R606 A5	R817 C5	
C508 D1	D101 A4	R607 A5	R818 C5	
C509 B2	D102 B3	R809 B7	R819 C5	
C610 A2	D103 A3	R610 B7	R820 B5	
C611 A1	D104 A2	R821 A7	R821 C5	
C601 A6	D105 B3	R612 B7	R822 B4	
C602 B6	D106 E6	R613 A7	R823 B4	
C603 B6	D301 D7	R614 A7	R824 B4	
C609 E6	D601 B7	R615 A7	R825 B4	
C810 A6	D602 B7	R616 A6	R826 A4	
C612 D6	D603 B6	R617 B7	R827 A4	
C613 B7	D701 D1	R618 C7	R828 B5	
C656 C7	E701 D3	R620 A7	R829 B5	
C657 C6	F101 E6	R621 A7	R830 B5	
C658 B7	FL81 C6	R831 B6	R831 A5	
C659 B7	FL82 C6	R632 B6	R832 B5	
C660 B7	IC11 A3	R633 B6	R833 B5	
C661 B7	IC31 E7	R634 B6	R834 B6	
C662 B7	IC61 C1	R635 C7	R835 B6	
C663 C7	IC81 B7	R636 C7	R837 B6	
C664 C7	IC62 A7	R637 C7	R838 B6	
C665 A7	IC71 D4	R638 C7	R840 C5	
C701 D3	IC81 B5	R656 B7	R841 B6	
C702 E4	J102 E7	R702 D3	R842 B6	
C703 E4	J104 A2	R703 E3	R843 B6	
C704 D4	J402 E2	R704 D4	R844 B5	
C705 D3	J601 A1	R705 E4	R845 B6	
C706 D3	J601 A6	R706 D4	R846 B6	
C707 D3	J701 D1	R707 D3	R847 B6	
C708 D2	J702 B1	R708 C7	R848 A6	
C709 D2	J801 A4	R709 C7	R849 A6	
C710 D2	L101 B4	R710 C7	R850 A5	
C711 D6	L102 B4	R711 C7	R851 A5	
C712 D7	L103 A2	R712 D6	R854 C4	
C713 D7	L104 B2	R713 D7	R855 C4	
C714 C7	L105 B3	R714 D7	R856 C4	
C715 E4	L601 A5	R715 D7	R857 C5	
C716 C6	L701 E4	R717 C7	R858 C5	
C717 E2	L702 D3	R718 D7	T101 B3	
C718 D2	L711 D5	R719 D7	TP13 A2	
C719 E6	L712 D5	R720 D7	TP31 D7	
C720 D6	L713 C6	R731 D7	TP51 A1	
C721 E4	Q101 A3	R732 D6	TP52 B1	
C722 D4	Q601 B7	R733 D7	TP62 A6	
C723 C4	Q602 A7	R735 D3	TP63 A7	
C724 D5	Q603 A7	R736 D3	TP64 A7	
C725 D4	Q701 E4	R737 D2	TP70 D4	
C726 D5	Q702 C7	R738 D2	TP71 D2	
C727 D5	Q703 C7	R739 D3	TP72 D2	
C728 D5	Q704 C7	R740 D3	TP73 E4	
C729 D5	Q705 D2	R741 D3	TP74 D3	
C730 E5	Q706 D8	R742 D2	TP75 D5	
C731 D5	Q707 D7	R743 D3	TP76 D6	
C732 D5	Q708 D7	R745 D2	TP78 B1	
C733 E6	Q709 D6	R746 D1	TP81 A5	
C734 C1	Q710 D6	R747 D1	X601 A6	
C735 D6	Q711 D5	R750 D4	X602 A7	
C736 D2	Q712 D2	R751 E4	X701 D4	
C801 B5	R101 A3	R752 D5	X702 C5	

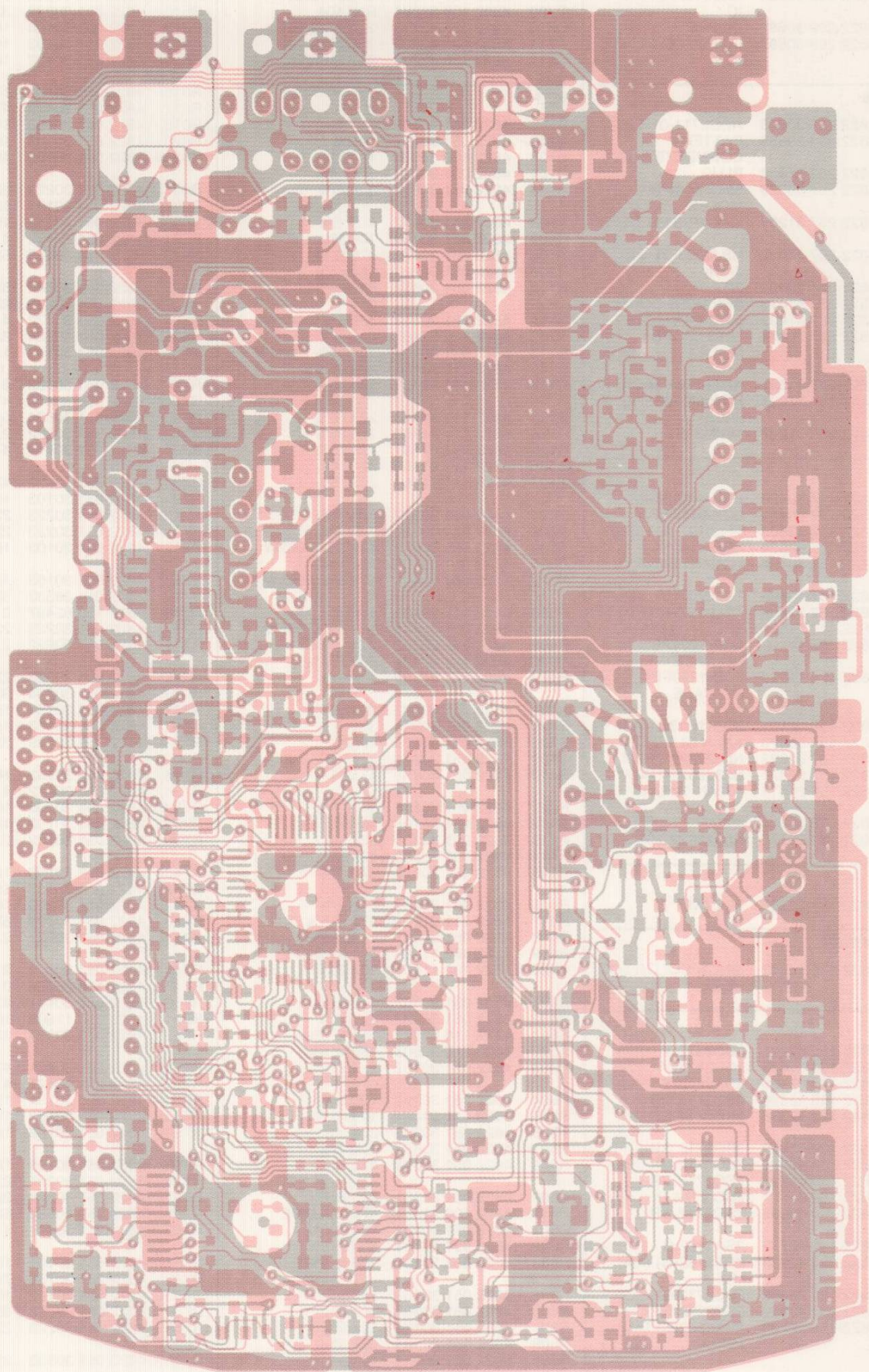


Dessins platine Printdarstellung / Print Layout /

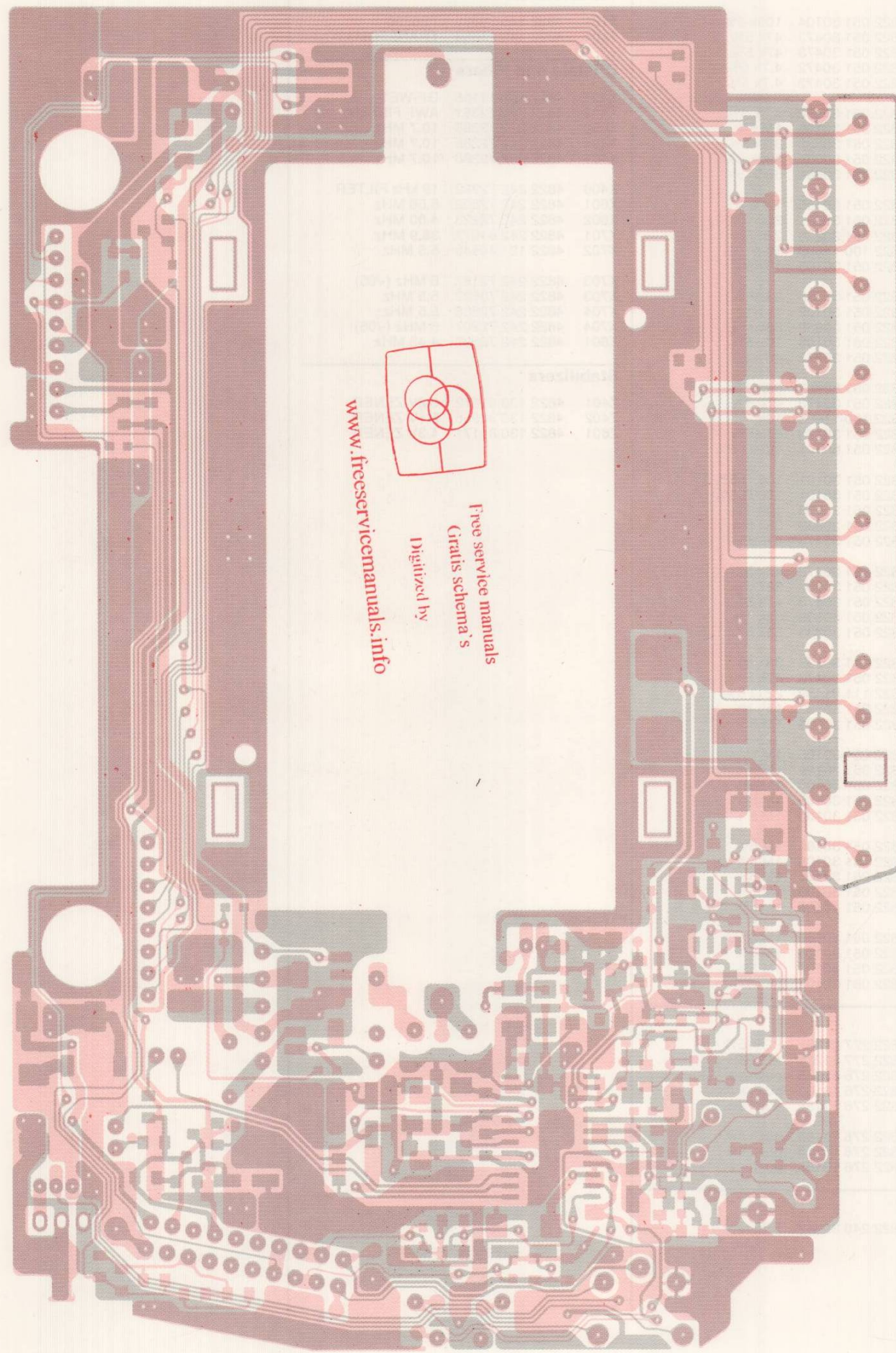
- C121 F1
- C202 G6
- C203 F6
- C204 F1
- C401 H6
- C402 H6
- C403 G7
- C404 I7
- C405 H7
- C406 H7
- C407 H7
- C408 H7
- C409 H7
- C410 I7
- C411 J7
- C412 I7
- C413 H7
- C414 I7
- C415 I7
- C416 I7
- C417 I6
- C418 I6
- C419 I6
- C420 I6
- C421 H6
- C422 H6
- C423 I6
- C424 H6
- C425 H6
- C426 J6
- C427 I6
- C428 I6
- C429 I6
- C430 I6
- C431 J6
- C432 J6
- C433 I5
- C434 G7
- C435 I5
- C436 I5
- C437 I5
- C609 E6
- C702 E4
- C703 E4
- C715 E4
- C717 E2
- C719 E6
- C721 E4
- C730 E5
- C733 E6
- D106 E6
- D107 F7
- D108 F7
- D401 F6
- D402 F7
- D403 I6
- D404 I6
- D405 H6
- D406 I5
- D601 F2
- D805 I1
- D806 I1
- D807 I3
- F101 E6
- F102 F6
- IC31 E7
- IC41 H6
- J101 F7
- J102 E7
- J105 F2
- J401 H6
- J402 E2
- J602 G1
- J602 F5
- L106 F1
- L201 F6
- L401 H6
- L402 I6
- L403 H6
- L404 I6
- L701 E4
- Q201 G6
- Q202 G6
- Q203 F2
- Q401 F7
- Q701 E4
- R121 F7
- R122 F7
- R123 F7
- R124 F7
- R125 G7
- R126 F3
- R127 F3
- R201 F6
- R202 G6
- R203 F2
- R401 H6
- R402 F6
- R403 F7
- R404 G7
- R406 H7
- R408 I6
- R409 I6
- R410 I6
- R411 I6
- R412 H6
- R413 I6
- R414 I5
- R415 I6
- R416 I5
- R417 F7
- R418 I7
- R419 I7
- R420 I7
- R421 I7
- R422 I7
- R609 F3
- R611 I8
- R703 E3
- R705 E4
- R761 E4
- S101 G7
- S401 H8
- S601 J3
- S602 J5
- S603 J4
- S604 J4
- S605 J1
- S606 J2
- T201 G6
- TP17 F7
- TP18 F6
- TP19 F7
- TP23 H1
- TP24 H6
- TP41 H6
- TP42 H6
- TP43 H8
- TP44 G8
- TP45 G7
- TP46 F7
- TP47 H6
- TP53 G8
- TP54 G7
- TP73 E4
- X401 H6
- X402 H7
- X403 G7
- X404 G7
- X405 G7
- X406 H7
- X703 E5
- Z401 F7
- Z402 I7



Printdarstellung / Print Layout /



Dessins platine



Spare parts list / Stückliste / Liste des pièces

CHASSIS LCD3-ECO 9.3

9.2 CHASSIS LCD3-ECO

Spare parts list / Stückliste / Liste des pièces

Spare parts list / Stückliste / Liste des pièces

CHASSIS LCD3-ECO 9.1

Main, Radio and Backlight P.C. Board

Transformers		
R801	4822 051 30104	100k 5%
R802	4822 051 30473	47k 5%
R803	4822 051 30473	47k 5%
R804	4822 051 30472	4.7k 5%
R805	4822 051 30472	4.7k 5%
R806	4822 051 30472	4.7k 5%
R807	4822 051 30105	1M 5%
R808	4822 051 30332	3.3k 5%
R809	4822 051 30334	330k 5%
R810	4822 051 30684	680k 5%
R811	4822 051 30105	1M 5%
R812	4822 051 30221	220 Ω 5%
R813	4822 051 30223	22k 5%
R814	4822 100 11608	10k
R815	4822 051 30103	10k 5%
R816	4822 051 30333	33k 5%
R817	4822 051 30102	1k 5%
R818	4822 051 30683	68k 5%
R819	4822 051 30103	10k 5%
R820	4822 051 30472	4.7k 5%
R821	4822 051 30682	6.8k 5%
R822	4822 051 30473	47k 5%
R823	4822 100 11608	10k
R824	4822 051 30473	47k 5%
R825	4822 051 30101	100 Ω 5%
R826	4822 051 30101	100 Ω 5%
R827	4822 051 30101	100 Ω 5%
R828	4822 051 30103	10k 5%
R829	4822 051 30333	33k 5%
R830	4822 051 30473	47k 5%
R831	4822 051 30473	47k 5%
R832	4822 051 30333	33k 5%
R833	4822 051 30473	47k 5%
R834	4822 051 30333	33k 5%
R835	4822 051 30333	33k 5%
R837	4822 051 30333	33k 5%
R838	4822 051 30473	47k 5%
R840	4822 111 91459	22 Ω 5%
R841	4822 051 30153	15k 5%
R842	4822 051 30105	1M 5%
R843	4822 051 30105	1M 5%
R844	4822 051 30105	1M 5%
R845	4822 051 30105	1M 5%
R846	4822 051 30105	1M 5%
R847	4822 051 30105	1M 5%
R848	4822 051 30105	1M 5%
R849	4822 051 30105	1M 5%
R850	4822 051 30105	1M 5%
R851	4822 051 30105	1M 5%
R854	4822 051 30105	1M 5%
R855	4822 051 30105	1M 5%
R856	4822 051 30105	1M 5%
R857	4822 051 30105	1M 5%
R858	4822 051 30102	1k 5%

Switch		
S101	4822 277 21551	POWER
S401	4822 277 21286	AM/FM
S601	4822 276 13185	push sw
S602	4822 276 13185	push sw
S603	4822 276 13185	push sw
S604	4822 276 13185	push sw
S605	4822 276 13185	push sw
S606	4822 276 13185	push sw

Speaker		
SP51	4822 240 30548	SPEAKER

Crystals and Filters		
X401	4822 156 11105	GF-WE1
X402	4822 242 72381	AWF FILTER
X403	4822 242 72385	10.7 MHz
X404	4822 242 72385	10.7 MHz
X405	4822 242 72386	10.7 MHz
X406	4822 242 72382	19 kHz FILTER
X601	4822 242 72592	5.56 MHz
X602	4822 242 72223	4.00 MHz
X701	4822 242 81071	38.9 MHz
X702	4822 121 40545	5.5 MHz
X703	4822 242 72187	6 MHz (-/05)
X703	4822 242 73622	5.5 MHz
X704	4822 242 72586	5.5 MHz
X704	4822 267 31435	6 MHz (-/05)
X801	4822 242 72593	4.43 MHz

Stabilizers		
Z401	4822 130 81672	6.2V ZENER
Z402	4822 130 32955	5.1V ZENER
Z601	4822 130 81171	4.3V ZENER

L101	4822 157 60429	LQH4N102K-S
L102	4822 157 60431	LQH4N471K-S
L103	4822 157 53865	TSL0707-101KR66
L104	4822 157 60431	LQH4N471K-S
L105	4822 157 60429	LQH4N102K-S
L106	4822 157 53865	TSL0707-101KR66
L201	4822 157 53869	TSL0707-471KR30
L401	4822 156 11106	5CDLN-1283AQ
L402	4822 156 11108	5CB-1299FE: NO CASE
L403	4822 156 11108	5CB-1299FE: NO CASE
L404	4822 156 11107	5CDLN-1366FYN
L601	4822 157 53873	100 H NL322522
L701	4822 157 62322	NL322522-2R2M
L702	4822 157 53871	NL322522-1ROM
L711	4822 156 21614	432AN-1242NK
L712	4822 156 21614	432AN-1242NK
L713	4822 157 60178	NL322522-150K

Lamp		
LP21	4822 134 80169	FL LAMP

LCD Display		
PL31	4822 130 90922	3INCH COLOR LCD LQ32

Q101	4822 130 61425	2SC2873-Y
Q201	4822 130 61425	2SC2873-Y
Q202	4822 130 61425	2SC2873-Y
Q203	4822 130 43398	2SC2712 GR
Q401	4822 130 43398	2SC2712 GR
Q601	4822 130 43398	2SC2712 GR
Q602	4822 130 43398	2SC2712 GR
Q603	4822 130 43398	2SC2712 GR
Q701	4822 130 61424	2SC 2714 O
Q702	4822 130 43398	2SC2712 GR
Q703	4822 130 42733	2SA1162 G
Q704	4822 130 42733	2SA1162(G) FOR MIX A
Q705	4822 130 43398	2SC2712 GR
Q706	4822 130 43398	2SC2712 GR
Q707	4822 130 42733	2SA1162(G) FOR MIX A

Main, Radio and Backlight P.C. Board

IC71	4822 209 30224	M52018FP; RF IF IC
IC81	4822 209 30687	IR3P96
IC81	4822 209 30687	IR3P96 / CHROMA IC F

Sockets		
J101	4822 265 30656	HEC2711-01-020
J102	4822 265 30858	BATTERY CONNECTER; I PLUG
J104	4822 267 31436	5513-09CPB
J105	4822 267 50779	MOLEX
J401	4822 267 31204	IL-Y-2P-S15T2-EF
J501	4822 267 31022	HSJ0863-01-440: JACK-2P
J502	4822 265 20592	
J503	4822 321 61413	SPEAKER CORD
J601	4822 267 31435	5512-08A MOLEX
J602	4822 267 31434	5513-08CPB MOLEX
J701	4822 267 31221	ANTENNA JACK
J702	4822 267 31021	HSJ0863-01-410: JACK-16FMZ-BT
J801	4822 267 31206	

L101	4822 157 60429	LQH4N102K-S
L102	4822 157 60431	LQH4N471K-S
L103	4822 157 53865	TSL0707-101KR66
L104	4822 157 60431	LQH4N471K-S
L105	4822 157 60429	LQH4N102K-S
L106	4822 157 53865	TSL0707-101KR66
L201	4822 157 53869	TSL0707-471KR30
L401	4822 156 11106	5CDLN-1283AQ
L402	4822 156 11108	5CB-1299FE: NO CASE
L403	4822 156 11108	5CB-1299FE: NO CASE
L404	4822 156 11107	5CDLN-1366FYN
L601	4822 157 53873	100 H NL322522
L701	4822 157 62322	NL322522-2R2M
L702	4822 157 53871	NL322522-1ROM
L711	4822 156 21614	432AN-1242NK
L712	4822 156 21614	432AN-1242NK
L713	4822 157 60178	NL322522-150K

L101	4822 157 60429	LQH4N102K-S
L102	4822 157 60431	LQH4N471K-S
L103	4822 157 53865	TSL0707-101KR66
L104	4822 157 60431	LQH4N471K-S
L105	4822 157 60429	LQH4N102K-S
L106	4822 157 53865	TSL0707-101KR66
L201	4822 157 53869	TSL0707-471KR30
L401	4822 156 11106	5CDLN-1283AQ
L402	4822 156 11108	5CB-1299FE: NO CASE
L403	4822 156 11108	5CB-1299FE: NO CASE
L404	4822 156 11107	5CDLN-1366FYN
L601	4822 157 53873	100 H NL322522
L701	4822 157 62322	NL322522-2R2M
L702	4822 157 53871	NL322522-1ROM
L711	4822 156 21614	432AN-1242NK
L712	4822 156 21614	432AN-1242NK
L713	4822 157 60178	NL322522-150K

L101	4822 157 60429	LQH4N102K-S
L102	4822 157 60431	LQH4N471K-S
L103	4822 157 53865	TSL0707-101KR66
L104	4822 157 60431	LQH4N471K-S
L105	4822 157 60429	LQH4N102K-S
L106	4822 157 53865	TSL0707-101KR66
L201	4822 157 53869	TSL0707-471KR30
L401	4822 156 11106	5CDLN-1283AQ
L402	4822 156 11108	5CB-1299FE: NO CASE
L403	4822 156 11108	5CB-1299FE: NO CASE
L404	4822 156 11107	5CDLN-1366FYN
L601	4822 157 53873	100 H NL322522
L701	4822 157 62322	NL322522-2R2M
L702	4822 157 53871	NL322522-1ROM
L711	4822 156 21614	432AN-1242NK
L712	4822 156 21614	432AN-1242NK
L713	4822 157 60178	NL322522-150K

L101	4822 157 60429	LQH4N102K-S
L102	4822 157 60431	LQH4N471K-S
L103	4822 157 53865	TSL0707-101KR66
L104	4822 157 60431	LQH4N471K-S
L105	4822 157 60429	LQH4N102K-S
L106	4822 157 53865	TSL0707-101KR66
L201	4822 157 53869	TSL0707-471KR30
L401	4822 156 11106	5CDLN-1283AQ
L402	4822 156 11108	5CB-1299FE: NO CASE
L403	4822 156 11108	5CB-1299FE: NO CASE
L404	4822 156 11107	5CDLN-1366FYN
L601	4822 157 53873	100 H NL322522
L701	4822 157 62322	NL322522-2R2M
L702	4822 157 53871	NL322522-1ROM
L711	4822 156 21614	432AN-1242NK
L712	4822 156 21614	432AN-1242NK
L713	4822 157 60178	NL322522-150K

Q101	4822 130 61425	2SC2873-Y
Q201	4822 130 61425	2SC2873-Y
Q202	4822 130 61425	2SC2873-Y
Q203	4822 130 43398	2SC2712 GR
Q401	4822 130 43398	2SC2712 GR
Q601	4822 130 43398	2SC2712 GR
Q602	4822 130 43398	2SC2712 GR
Q603	4822 130 43398	2SC2712 GR
Q701	4822 130 61424	2SC 2714 O
Q702	4822 130 43398	2SC2712 GR
Q703		